

MULTIMATERIAL-WELDING® TECHNOLOGY FOR EPP FOAMS

MM-Welding® LiteWWeight® zEPP



WHAT IS MM-WELDING®?

MM-Welding® is an innovative fastening technology platform that uses ultrasonic energy to partially melt thermoplastic materials into porous materials to create a functional and strong form-lock connection in fractions of a second.

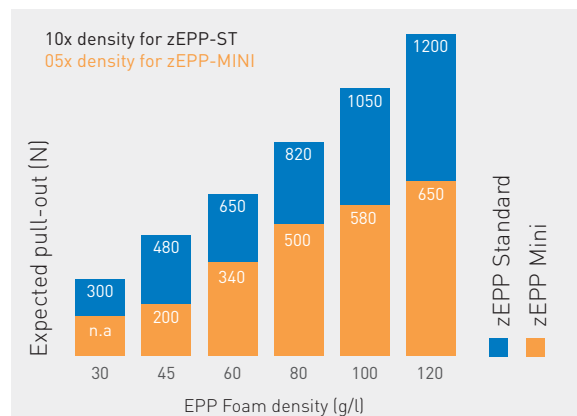
LITEWEIGHT ZEPP

- Fast and strong fixation technology for EPP foam using the MM-Welding® process based on ultrasonic vibration
- Standard solution for a wide range of densities

ADVANTAGES OF MM-WELDING®

- Very fast processing time of < 3 seconds
- High pull-out strength due to optimal integration to material
- High torque resistance because of MM-Welding® specific anti-turning structures
- Full integration in substrate possible
- Placement even close to the edge of the EPP possible
- Low fastener height for less space limitations
- Applicable in all densities
- No pre-drilling

AXIAL PULL-OUT FORCE/PERFORMANCE



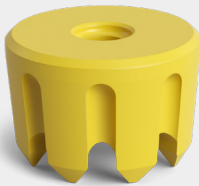
LiteWWeight® zEPP in use with self-tapping screw

MULTIMATERIAL-WELDING® TECHNOLOGY FOR EPP FOAMS

MM-Welding® LiteWWeight® zEPP



As an example, "Hinge" MM-Welding® specific connection structures already integrated



LiteWWeight® zEPP Mini Y

FUNCTIONALLY INTEGRATED PARTS (FIP)

LiteWeight® zEPP connection geometry can be integrated into the injection molded part, which simplifies production, reduces costs and enables complete design freedom.

ADVANTAGES OF FIP

- Geometrical freedom – No rotational symmetry required
- Higher Strength – With less material, higher strength can be achieved
- Reduced time and costs: Very fast process and less parts to manipulate which reduces costs

We have summarized further data and technical information in a technical data sheet:

<https://www.bossard.com>

