

Guideline Bossard CAD

INDEX

Registering on CAD online portal «PARTcommunity».....	1
Login on «PARTcommunity» and download of CAD models.....	4
Frequently asked questions (FAQs).....	8

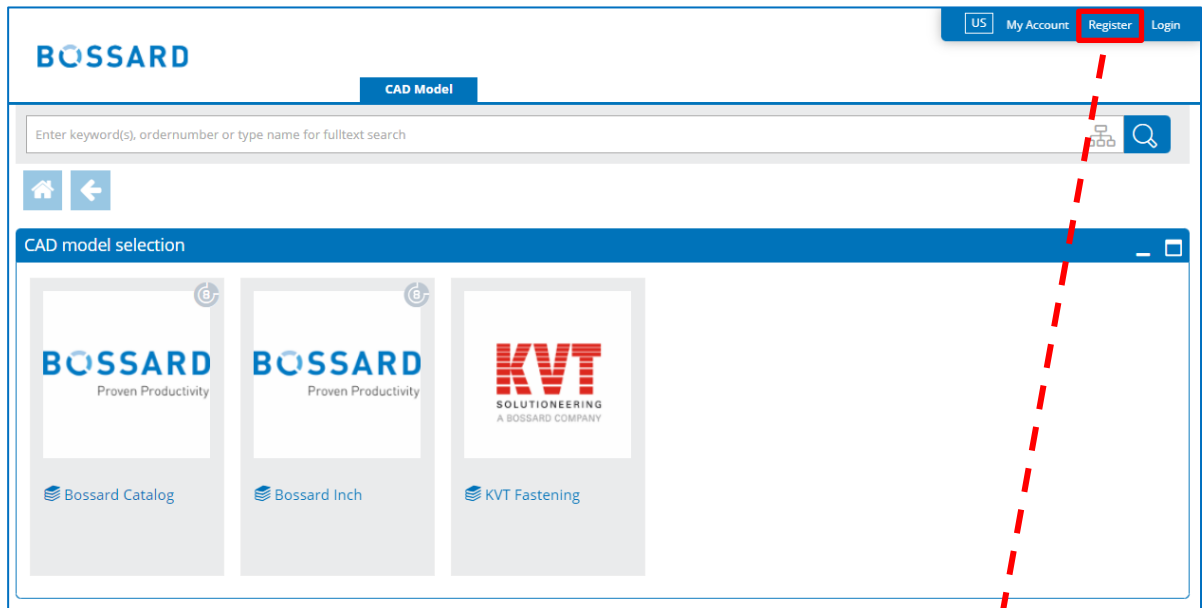
REGISTERING ON CAD ONLINE PORTAL «PARTCOMMUNITY»

To download CAD models of Bossard products, a registration at a special CAD online portal, called PARTcommunity, is necessary. The following guideline provides help and leads through the registration process step by step.

1. On the Bossard homepage, please click on the menu item **«CAD Online Portal»** in the drop-down menu of Assembly Technology Expert. Alternatively, you can also click [here](#) to get directly to the Online Portal «PARTcommunity»

The screenshot shows the Bossard website's navigation menu with 'Assembly Technology Expert' selected. The breadcrumb trail is 'Home > Assembly Technology Expert > Technical Information and Tools > CAD Online Portal'. The main heading is 'CAD Online Portal'. Below it, a paragraph describes the CAD tool's capabilities. A red box highlights a blue icon of a document with 'CAD' written on it, labeled 'CAD Online Portal'. To the right, there is a 'Your local contact' dropdown menu and a link for 'Guideline Online CAD EN | DE'. A 'back' link is at the bottom left.

2. You will now be forwarded to the login page of the PARTcommunity.



3. Please click on button «**Register**»



4. Now a registration form appears. Please fill out your account data, your personal information and your general preferences and click on «**Register**» (see picture on following page).

PLEASE NOTE: PARTcommunity is a B2B platform and no so called freemail-addresses are allowed for registration (e.g. @gmail, @hotmail, @gmx). Please use your official company email address for registration only.

BOSSARD


CAD Model

Account Data

Business email *

Password *

Confirm Password *

Avatar 

Business Contact

Title *

First name *

Last name *

Company *

Country *

Street *

ZIP *

City *

State/Area *

Phone *

General Preferences

Language *

Time zone *

Company Information

Number of employees *

Job title *

Industrial sector *

Terms of use and GTC

* As a business customer, I hereby accept the **Terms and Conditions** and the **Terms of Use** for this portal, as well as the processing (collection, storage, use and transfer) of my personal data described therein. Our **privacy policy** can be found [here](#).

I agree to receive information about CADENAS news about my industry by e-mail in the future. I am aware that I can revoke my consent at any time without giving reasons.

I hereby consent, that the manufacturers, whose CAD models I have downloaded, can contact me for promotional purposes, using the contact information from above. I am aware, that I can always revoke my consent from the manufacturer. A contact address for this purpose is attached to each catalog.

* Required fields

5. Now click on «**Register for free**». You will receive an activation email to complete the registration process. If you should not receive an email within one day, please check your firewall settings and your spam folder.

LOGIN ON «PARTCOMMUNITY» AND DOWNLOAD OF CAD MODELS

After successfully registering you now have the opportunity to download the desired Bossard CAD models for the CAD System you use. Please proceed as followed:

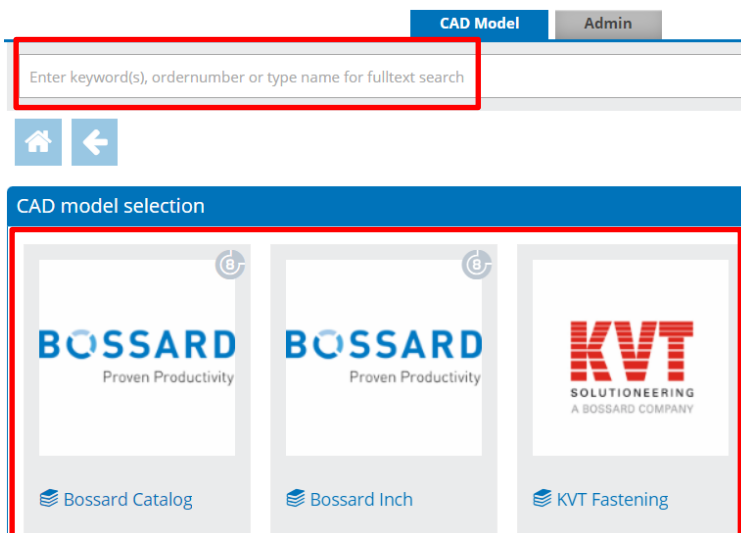
1. Click on button «**Login**»



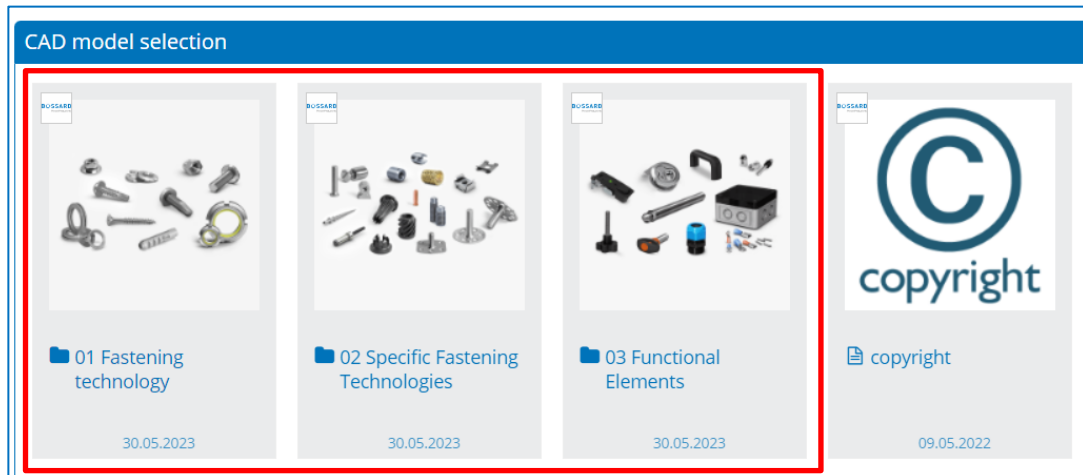
2. Login with your user name, your password and click on «**Login**». To simplify your login process in the future you can activate the option «**Remember me**».

The image shows the Bossard login form. It features the Bossard logo at the top. Below it is a red-bordered box containing the login fields: an 'Email' input field, a 'Password' input field with a 'Lost password?' link, a 'Remember me' checkbox, and a blue 'Login' button.

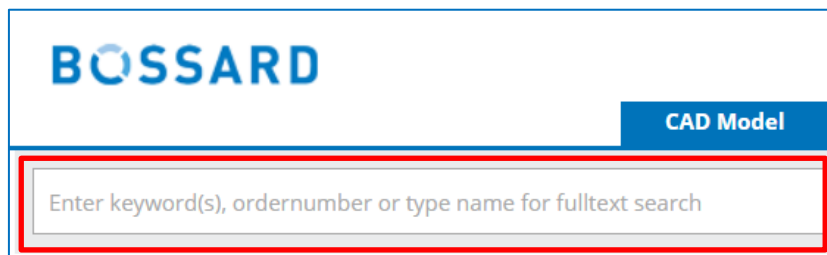
3. Now you will be forwarded to the main menu of the PARTcommunity. Please select the desired product catalog or use the search field on top to search for your desired products.



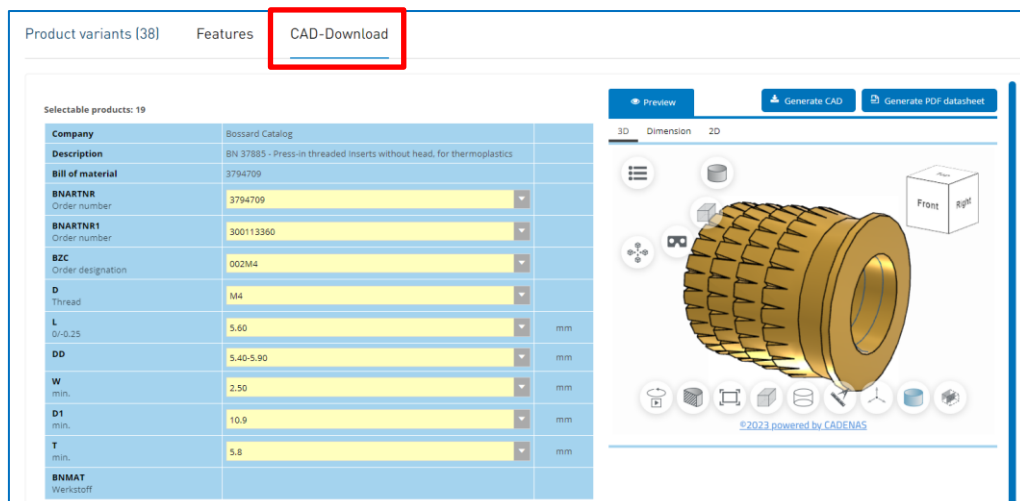
- You have different possibilities to find the product you are looking for. You just can scroll and klick through the different product types, visualized by product pictures.



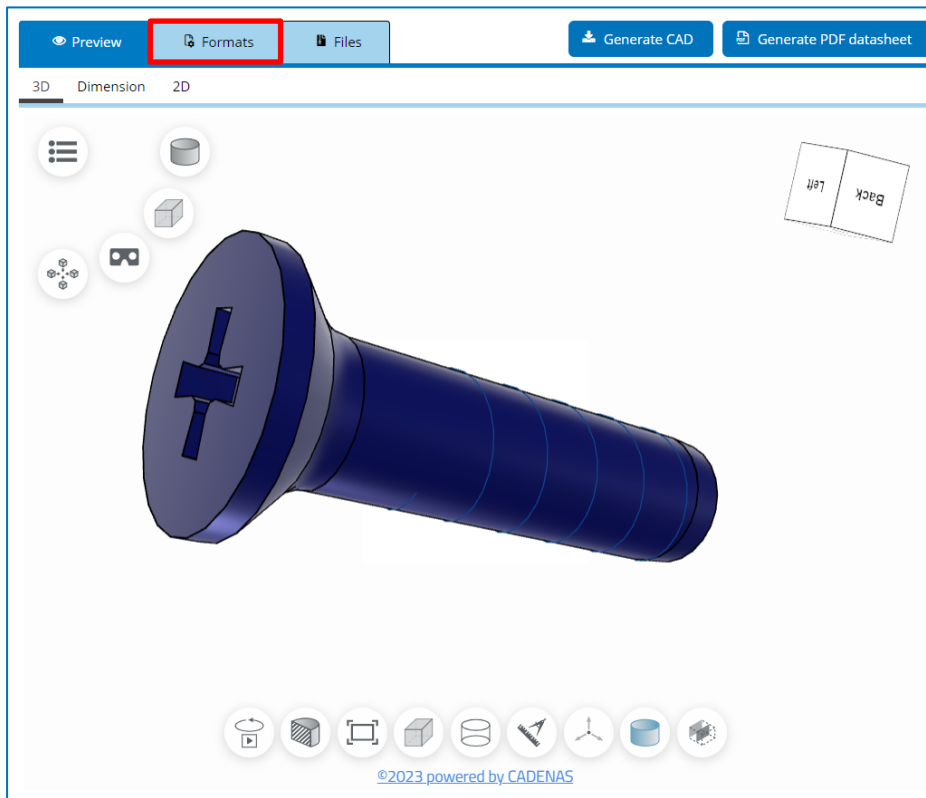
- Instead of clicking through the product groups and subgroups, you can also use the search form for a specific Bossard number, product name or brand.



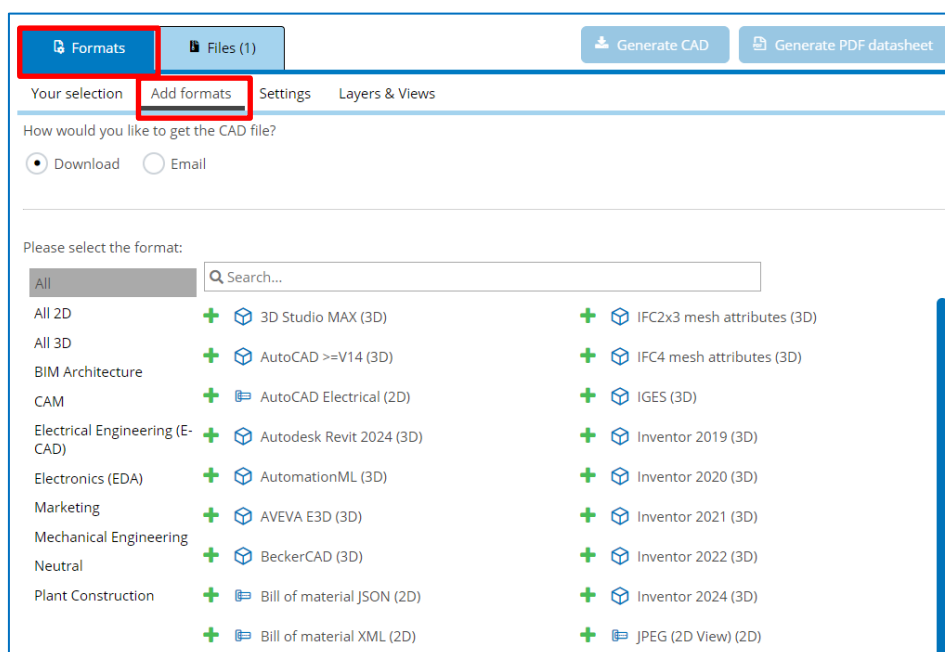
PLEASE NOTE: With this login credentials you can also download the 3D files directly from our Bossard website / e-shop.



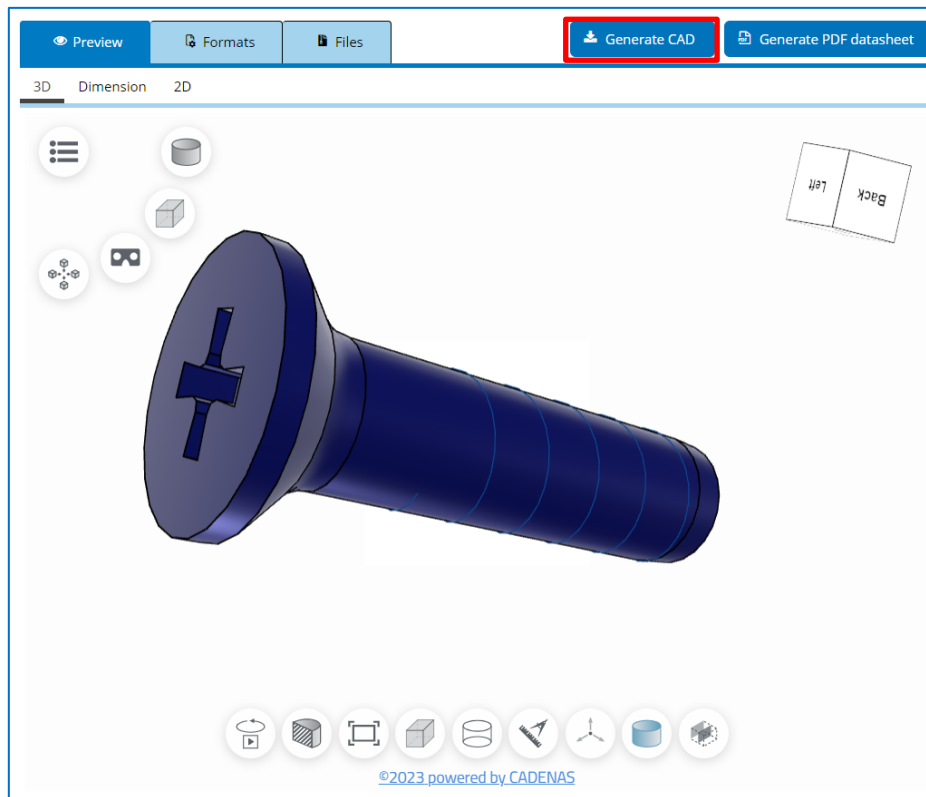
- When you have found the product you have been looking for, please click on it. A table will appear and a 3D preview on the right side of the screen.



- Next you need to define the file formats you want to download. Please click on **“Formats”** and **“Add formats”** to add the desired 2D or 3D formats:

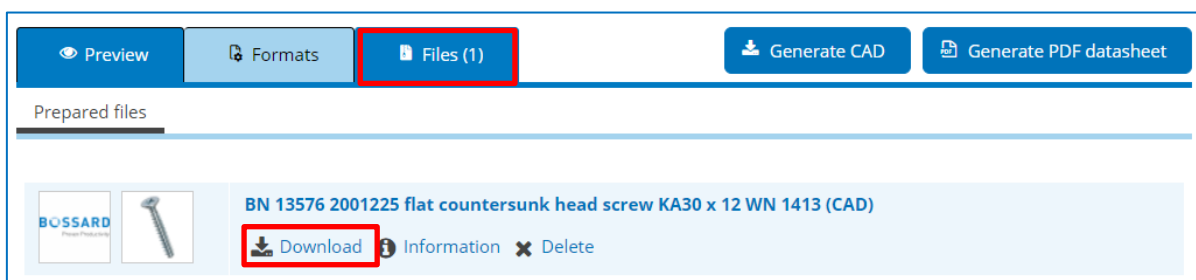


8. Now click the button «**Generate CAD**» to generate your files.



9. You can search for other products and generate more files directly.

10. After the file(s) are ready, you can just click on the tab “Files” and then “**Download**” to save the files on your PC..



PLEASE NOTE: Downloads are limited to 10 downloads in 4 weeks per default

FREQUENTLY ASKED QUESTIONS (FAQS)

I have lost my password, what can I do?

Click in the login menu (see page 4) on «**Lost password?**» and fill out your email address. You will receive an email with a new password.

When I am trying to register, there is a message displayed «email address already exists»

Have you already registered your email address directly on the PARTcommunity? Please check that by clicking on «**Lost password**» in the main menu and login with the new password you received by email.

I have not received an activation mail, what is the reason for that?

Sometimes spam settings prevent you from receiving the sent activation mail. Please check your spam folder and firewall settings. If there is no email in the spam folder, please use the button «**resend activation mail**» in the main menu.

When I am trying to download a CAD model, a message appears, stating that my email address was blocked. What does that mean?

Have you used a freemail email address for registration (e.g. @gmx, @web, @gmail)? These email addresses will be blocked by the portal automatically. Unfortunately, it is not possible to change your e-mail address in the personal settings. We suggest deleting your profile and to register new with your business e-mail address.

I have reached my monthly download limit of 10 downloads but I do need more CAD models.

Please contact your Bossard sales or engineering contact and ask for additional downloads. With the e-mail address you registered in the PartCommunity the Bossard Group Sales and Marketing will be able to raise the number of downloads to max. 50 downloads in 4 weeks.

Where can I get additional support?

For all requests and problems with the PARTcommunity, please contact the Cadenas First Level Support: <https://b2b.partcommunity.com/community/help/contact>